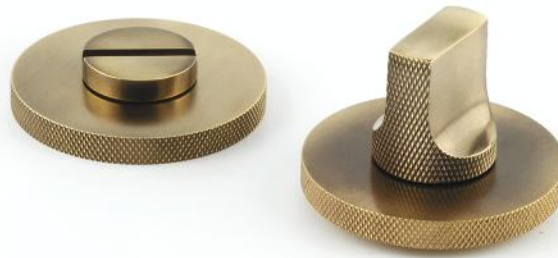


# Hard & Ware



## T&RSET21-RR10

### Specification:

Solid brass Turn and Release Set  
With 5mm Spindle

### Finish:

All Standard Finishes available

### Included:

X1 Turn & Release Set  
5mm Spindle

### Care Instructions:

Clean wipe with damp cloth. Avoid using any chemicals.  
Please note all living finishes are prone to aging & ware

